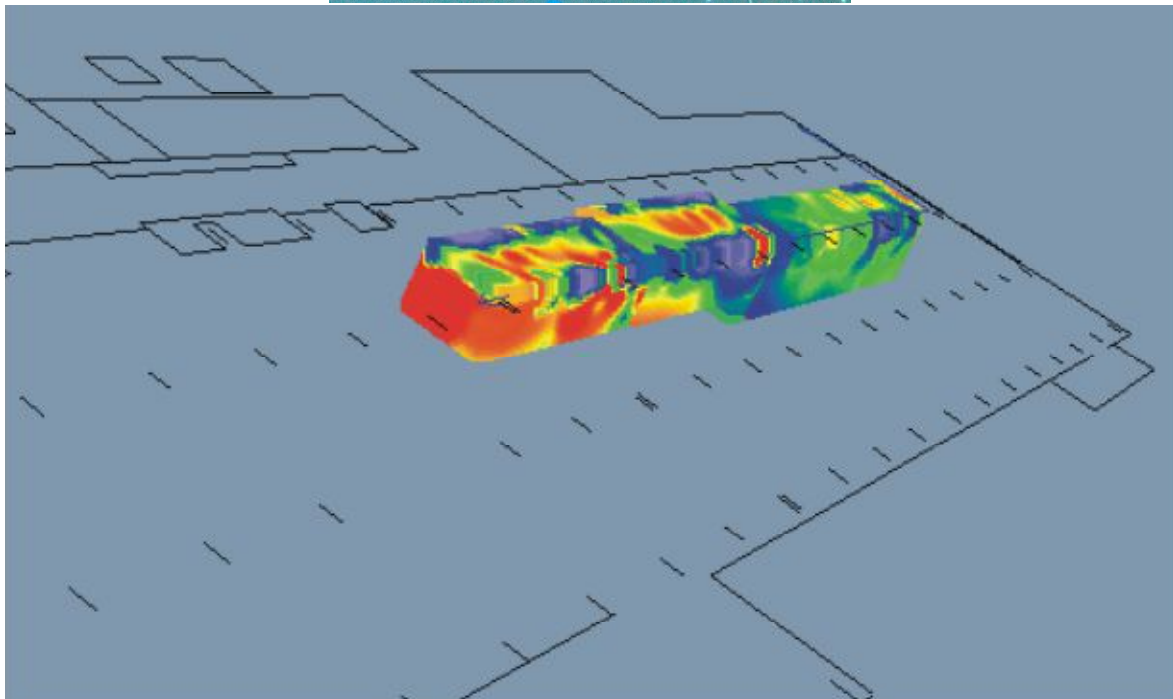


## 3D seismic refraction and electric tomography survey

The aim of the study was to assess the situation of the ground area of length of 150-160 and a width of approximately 15 m, inside an industrial building.  
The investigated area was to accommodate heavy machinery and the risk of cavities in the subsoil was high, due to the karst

### Site View:



3D Electrical resistivity tomography for Geotechnical Investigations: resistivity response of the investigated area